

22Miles and Microsoft: The Employee Office Suite

Combining the innovative capabilities of 22Miles and Microsoft, the Employee Office Suite redefines workplace communication, resource utilization, and team collaboration. This integration offers streamlined processes for content sharing, meeting scheduling, and team engagement—anytime, anywhere.

The Challenge

As organizations embrace dynamic work environments, ensuring seamless collaboration across locations, devices, and communication platforms has become a critical challenge. Employees often face hurdles such as:

- Fragmented communication channels lead to delays in decision-making.
- Limited visibility of critical updates or resources across teams.
- Complicated workflows that discourage real-time collaboration and efficiency.

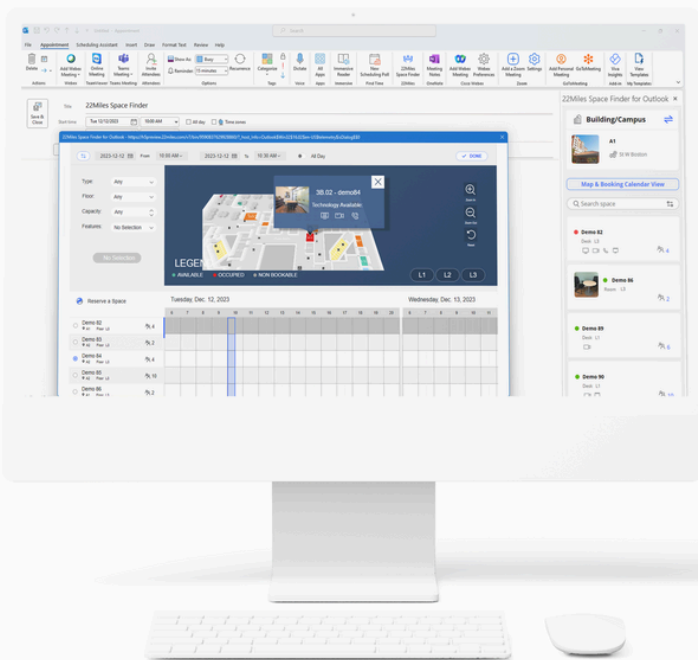
These barriers hinder productivity and reduce employee engagement, making it essential to implement solutions bridging communication and resource access gaps.



The Solutions: Anytime, Anywhere Collaboration

22Miles' Employee Office Suite, integrated with Microsoft Teams and Outlook, provides a robust solution to these challenges. The omnichannel platform consolidates communication tools into one cohesive interface. From digital signage to mobile apps and Microsoft Teams channels, employees gain consistent access to critical updates and resources, ensuring they stay connected and informed regardless of location.

Key Features of the 22Miles Employee Office Suite

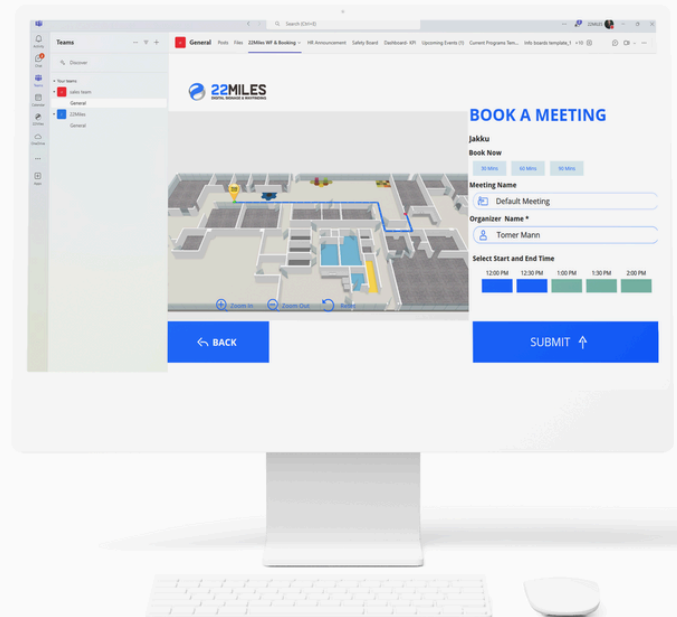


Microsoft Teams and Outlook Plugins

- **Streamlined Collaboration:** Employees can reply to threads, share content, and receive notifications directly within Microsoft Teams.
- **Enhanced Messaging:** Schedule and send announcements to Teams channels via the 22Miles CMS Teams Add-In Widget.
- **Digital Signage Integration:** Display critical updates and announcements on idle screens in MTR rooms and shared spaces.
- **Single Sign-On (SSO):** Seamlessly integrates with Azure Active Directory for easy access across Microsoft tools.

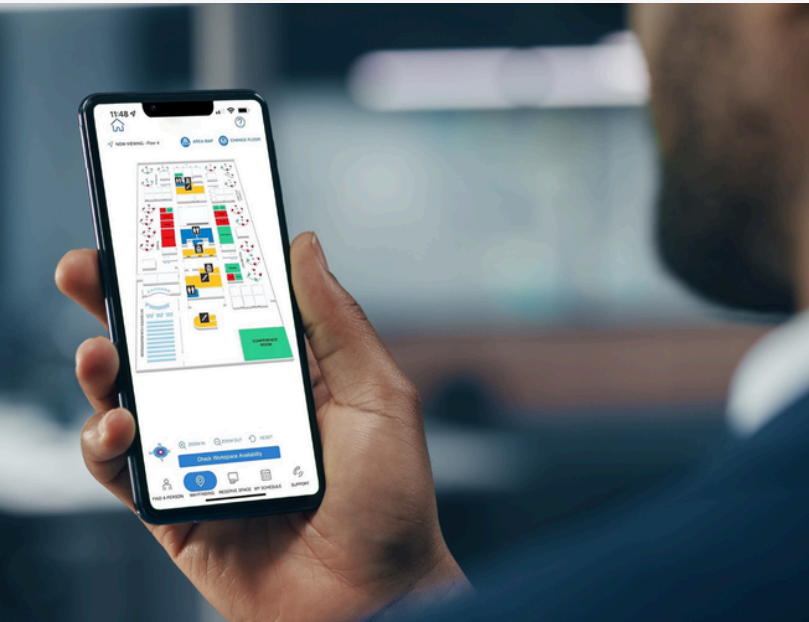
Room Booking and Hot Desking

- **Simplified Logistics:** Avoid scheduling conflicts with an intuitive, visual booking interface.
- **Streamlined Booking Experience:** The Outlook integration provides users with a visual and intuitive way to filter desks and rooms by features, amenities, and capacity. For example, users can view how many chairs a room has or if it includes specialized equipment complete with a 3D map.
- **Multi-Campus Filtering:** Seamlessly locate and book spaces across different campuses.
- **Live Updates on 3D Maps:** Enjoy a smart space experience with live updates of hoteling and hot desking availability, visible on interactive 3D maps.
- **Teams Plugin Design Capability:** Extend the touchscreen wayfinding and booking experience directly into Teams chat, enabling an interactive space-finding and booking experience within the familiar Microsoft interface.



PowerBI Integration

- **Data-Driven Insights:** Display real-time KPI dashboards on digital signage, mobile apps, and Microsoft Teams.
- **Improved Decision-Making:** Leverage dynamic data visualization to optimize performance.



Virtual Receptionist

- **Automated Check-Ins:** Streamline visitor management with self-service kiosks or mobile apps.
- **Enhanced Integration:** Notify hosts and sync with M365 Outlook Calendar for a seamless visitor experience.

Mobile Accessibility

- **On-the-Go Connectivity:** The Employee App ensures employees can access announcements, schedules, and resources from their mobile devices.
- **Unified Communication:** Manage group chats, meetings, and notifications under one interface. Even integrate with catering, ServiceNow, or other IT ticket systems to have IT support on the go.

Key Benefits of 22Miles and Microsoft Integration

- **Boost Productivity:** Centralize communication and streamline workflows to reduce inefficiencies.
- **Enhance Collaboration:** Foster better teamwork with intuitive tools and unified messaging.
- **Ensure Accessibility:** Keep all employees, regardless of location, informed and engaged.
- **Maximize ROI:** Leverage tools your workforce already knows and loves, like Teams and Outlook.

Ready to revolutionize how your workforce communicates and collaborates? Explore the seamless integration of 22Miles' omnichannel platform and Employee Office Suite with Microsoft tools. Experience enhanced efficiency, connectivity, and engagement tailored to your organization's unique needs.

Book a demo today at 22miles.com/contact-us/

